

www.rotofluidpumps.com  
Fuel Injection  
ROTARY GEAR PUMPS

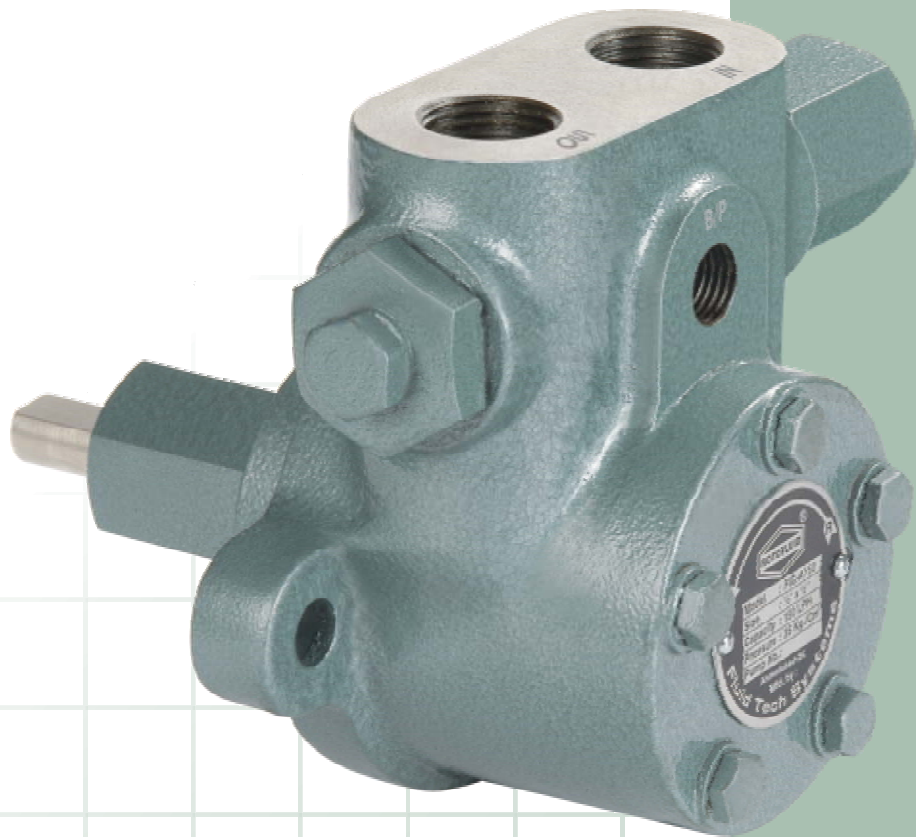
Series : FIG



Rotary Gear Pumps  
SINCE : 1993

## Perfect Solution

for Pressurizing of DIESEL, LDO,  
FO, HSD, & LSHS



An ISO 9001:2015 Certified Company

**Fluid Tech Systems**

Ahmedabad - 382 430. (Guj.) INDIA



*“Let Our  
Quality Speak  
For Itself”*



# "ROTOFLUID" FUEL INJECTION INTERNAL GEAR PUMP



## MODEL & PERFORMANCE CHART

Rotary Gear Pumps  
SINCE : 1993

| PUMP MODEL | SUC. & DEL. | CAP. IN LPH AT 1440 RPM | PRESSURE kg/Cm <sup>2</sup> | RECOMMENDED HP.      |                       |
|------------|-------------|-------------------------|-----------------------------|----------------------|-----------------------|
|            |             |                         |                             | 3 kg/Cm <sup>2</sup> | 35 kg/Cm <sup>2</sup> |
| FIG-S60    | 3/8"        | 60                      | 0 - 35                      | 0.25                 | 1.00                  |
| FIG-S90    | 3/8"        | 90                      | 0 - 35                      | 0.25                 | 1.00                  |
| FIG-S120   | 3/8"        | 120                     | 0 - 35                      | 0.25                 | 1.00                  |
| FIG-A150   | 1/2"        | 150                     | 0 - 35                      | 0.25                 | 1.50                  |
| FIG-A300   | 1/2"        | 300                     | 0 - 35                      | 0.25                 | 1.50                  |
| FIG-A450   | 1/2"        | 450                     | 0 - 35                      | 0.25                 | 2.00                  |
| FIG-A600   | 1/2"        | 600                     | 0 - 35                      | 0.25                 | 2.00                  |
| FIG-B1000  | 3/4"        | 1000                    | 0 - 35                      | 0.75                 | 3.00                  |
| FIG-B1500  | 3/4"        | 1500                    | 0 - 35                      | 0.75                 | 3.00                  |
| FIG-B2000  | 3/4"        | 2000                    | 0 - 35                      | 0.75                 | 5.00                  |
| FIG-B2500  | 3/4"        | 2500                    | 0 - 35                      | 0.75                 | 5.00                  |
| FIG-C3000  | 1"          | 3000                    | 0 - 30                      | 1.50                 | 7.50                  |
| FIG-C4500  | 1"          | 4500                    | 0 - 30                      | 1.50                 | 10.00                 |
| FIG-C6000  | 1"          | 6000                    | 0 - 30                      | 1.50                 | 15.00                 |

- Normal flow at 1440 r.p.m. or 2880 r.p.m. with oil viscosity 32 Cst. at 37.5°C at normal working temperature and 10 kg/cm<sup>2</sup> pressure.
- Min. Viscosity 5 Cst.
- Max. Viscosity 450 Cst.
- Max Liquid temperature 200°C.
- Capacity/Range, 60/6000 LPH, Max Pressure 35 kg/cm<sup>2</sup>.
- The pressure and flow indications are to be considered as basic value. They change with different pipe diameter, Length or oil viscosity.
- Direction of rotation clockwise = R • Anti-clockwise = L looking from shaft end.

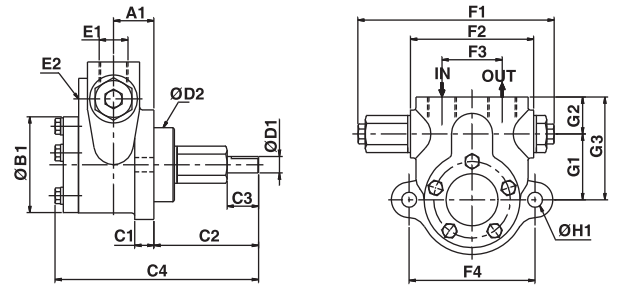
### ADVANTAGES

- Pump barrel made of hydraulic cast-iron.
- Gear made of high quality steel.
- Self inducing.
- With internal bypass.
- Pressure regulator, progressively adjustable.
- Simple attachment with a flange.
- Tight Shaft-seal.
- Turning direction to the right or left 1440 or 2880 r.p.m.
- Different mounting position with shaft horizontally or vertically with seal at the bottom.
- Vacuum, pressure and control connections easy to reach.

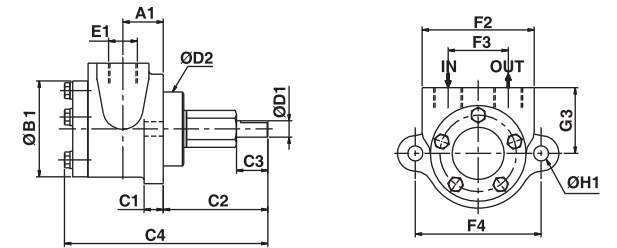
### APPLICATION

- Oil burner, hydraulic drive and pressure-pump.
- Pressure and transfer pump.
- Booster pump for diesel locomotive.
- Pump for force feed lubrication.
- Eventually with separate pressure regulating valves.
- For gas oil, medium, heavy and very heavy oil.
- Filter Pumping.
- Pump for PHF Units.
- Pump for motor-pump group with flange and coupling parts.
- Pump for lubrication oil and hydraulic oil.
- Pump suitable for LDO, FO, HSD & LSHS

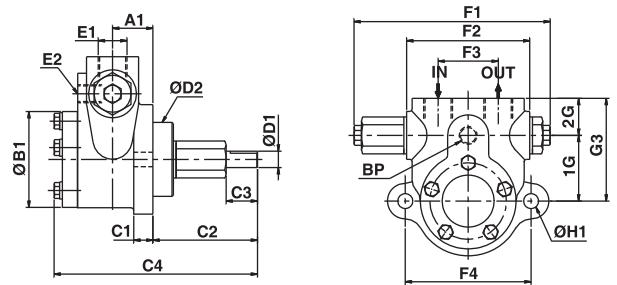
### • FO1....Pump with pressure Relief Valve & Internal By-pass



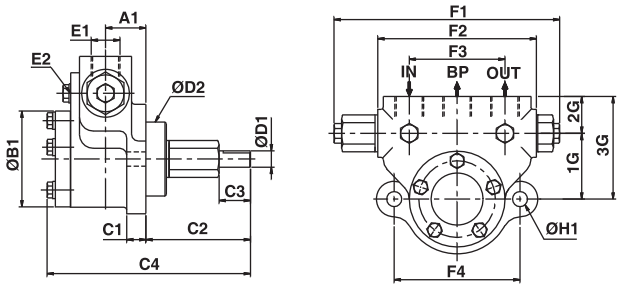
### • FO2....Pump without pressure Relief Valve



### • FO3....Pump with pressure Relief Valve & External By-Pass



### • BT....Pump with pressure Relief Valve & External top By-Pass.



## DIMENSIONAL DRAWING DETAILS

| MODEL    | CAP. IN LPH AT 1440 RPM | A1 | ØB1 | C1 | C2  | C3 | C4  | ØD1 | ØD2 | ØD3 | BSP E1 | BSP E2 | F1  | F2  | F3  | F4  | G1 | G2 | G3  | ØH1 |
|----------|-------------------------|----|-----|----|-----|----|-----|-----|-----|-----|--------|--------|-----|-----|-----|-----|----|----|-----|-----|
| FIGS-FO1 | 50-80                   | 20 | 51  | 14 | 76  | 20 | 132 | 12  | 54  | 80  | 3/8"   | -      | 139 | 90  | 38  | 92  | 40 | 27 | 67  | 11  |
| FIGA-FO1 | 150-600                 | 30 | 70  | 14 | 76  | 23 | 146 | 12  | 54  | 80  | 1/2"   | -      | 143 | 90  | 44  | 92  | 48 | 27 | 75  | 11  |
| FIGA-FO2 | 150-600                 | 30 | 70  | 14 | 76  | 23 | 146 | 12  | 54  | 80  | 1/2"   | -      | 143 | 82  | 44  | 92  | 48 | -  | 43  | 11  |
| FIGA-FO3 | 150-600                 | 30 | 70  | 14 | 76  | 23 | 146 | 12  | 54  | 80  | 1/2"   | 1/4"   | 143 | 90  | 44  | 92  | 48 | 27 | 75  | 11  |
| FIGB-FO1 | 1000-2500               | 38 | 96  | 15 | 124 | 29 | 211 | 18  | 60  | 100 | 3/4"   | -      | 162 | 118 | 67  | 120 | 55 | 35 | 90  | 13  |
| FIGB-FO2 | 1000-2500               | 38 | 96  | 15 | 124 | 29 | 211 | 18  | 60  | 100 | 3/4"   | -      | -   | 118 | 67  | 120 | -  | -  | 65  | 13  |
| FIGB-FO3 | 1000-2500               | 38 | 96  | 15 | 124 | 29 | 211 | 18  | 60  | 100 | 3/4"   | 3/8"   | 162 | 118 | 67  | 120 | 55 | 35 | 90  | 13  |
| FIGA-BT  | 150-600                 | 30 | 70  | 14 | 76  | 23 | 146 | 12  | 54  | 80  | 1/2"   | 1/4"   | 165 | 116 | 70  | 92  | 45 | 27 | 72  | 11  |
| FIGB-BT  | 1000-2500               | 38 | 96  | 15 | 124 | 29 | 211 | 18  | 60  | 100 | 3/4"   | 3/8"   | 194 | 150 | 100 | 120 | 65 | 40 | 105 | 13  |
| FIGC-FO1 | 3000-6000               | 85 | 115 | 18 | 127 | 37 | 275 | 22  | 80  | 120 | 1"     | -      | 211 | 150 | 80  | 150 | 80 | 40 | 120 | 15  |

\* All dimensions are in millimeters. Unless otherwise stated, specifications are subject to change without prior notice as improvements are made from time to time.

Mfgd. by :

An ISO 9001:2015 Certified Company



## Fluid Tech Systems

Ahmedabad - 382 430, (Guj.) INDIA  
E-mail : info@rotofluidpumps.com, marketing@rotofluidpumps.com  
Website : www.rotofluidpumps.com

Distributor :