

www.rotofluidpumps.com

ROTARY LOBE PUMP

Series: FTLB



Rotary Gear Pumps
SINCE : 1993

Perfect Solution
for Transfer of Corrosive, Hygienic
& Viscous Liquid



*“Let Our
Quality Speak
For Itself”*

ADVANCED TECHNOLOGY FOR PUMPING VISCOUS LIQUIDS



Rotary Gear Pumps
SINCE : 1993

ROTOFLUID® brand Stainless Steel Rotary Lobe Pump Model-FTLB are compact, efficient, bi-directional positive displacement pump for the transfer of corrosive chemicals, food & cosmetic and other viscous chemicals.

MODEL & PERFORMANCE CHART

PUMP MODEL	SUCTION & DELIVERY	CAPACITY CHART		Max. Speed (RPM)	Pressure (kg/cm ²)	Weight (Kg.)	
		Displacement @ 100 RPM				Horizontal Porting	Vertical Porting
		LPM	US GPM				
FTLB - 100S	1"	5	1.4	1000	7	15	16
FTLB - 100L	1"	8	2.25	1000	7	17	18
FTLB - 150S	1½"	12	3.38	1000	7	28	30
FTLB - 150L	1½"	18	4.78	1000	7	30	31
FTLB - 200S	2"	26	7.03	1000	7	52	55
FTLB - 200L	2"	38	10.15	1000	7	55	58
FTLB - 250S	2½"	55	14.64	1000	7	104	110
FTLB - 250L	2½"	79	20.87	1000	7	109	115
FTLB - 300S	3"	116	30.65	600	7	150	150
FTLB - 300L	3"	175	44.39	600	7	158	158
FTLB - 400S	4"	261	68.70	500	7	258	258
FTLB - 400L	4"	354	93.26	500	7	264	264

APPLICATION INDUSTRIES

- Food & Beverages Industry
- Pharmaceutical Industry
- Dyeing & Printing Houses
- Chemical Industry
- Cosmetic Industry

LIQUIDS CAN HANDLE

- All types of Food Products (Clarified Butter/Fruit Pulp/Vegetable Sauce/Vegetable Oil/Animal Oil/Fish Oil)
- Sugar Solution
- Glycerine, Glycol etc
- Cosmetic products (Shampoo/Body Lotion/Baby Oil/Hair Oil/Shower Gel/Soap Solution etc)
- Paints & Resins
- Corrosive Viscous Chemicals

SALIENT FEATURES

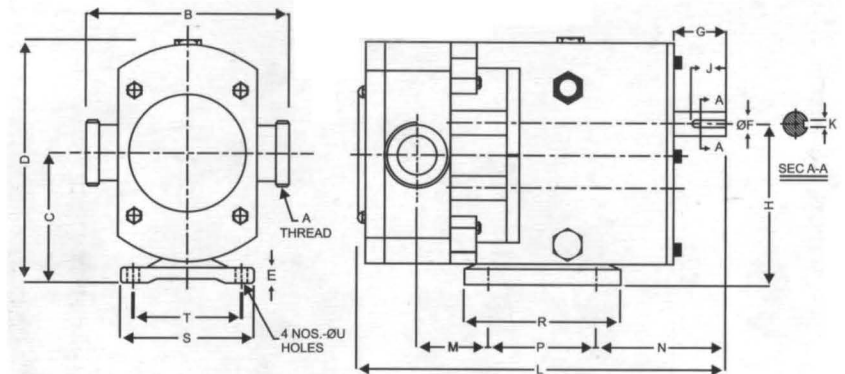
- Working Pressure upto 7 Bar
- Size from 1" to 4" to handle flow from 5 LPM to 1062 LPM
- Can handle maximum viscosity 20000 CST
- Designed to handle fluid at temperature upto 120°C
- Vertical and Horizontal type.
- High strength three pieces stainless steel construction in the pump makes its easily cleanable and maintainable.
- Available connection is SMS Union, TC Connection and Flange.

ACCESSORIES

- Stand and Base Plate
- Product Connecting Flanges
- Motor and Gear Reducers
- Variable Frequency Drives
- Electric Motor Stator
- Couplings

MATERIAL OF CONSTRUCTION

Parts	Material
Pump Chamber	SS-316
Tri-Lobe Rotor	SS-316
Top Cover	SS-316
Shaft	SS-316
Shaft Seal	Mech. Seal
Gear	EN-24
Casing	CI
Back Cover	CI
Bearing Spaler	CI
Bearing	SKF



DIMENSIONAL DRAWING DETAILS

PUMP MODEL	A	B	C	D	E	F	G	H	J	K	L	M	N	P	R	S	T	U
FTLB - 100S/L	1"	140	90	175	11	16	37	113	30	5	270/278	43/49	124	70	140	100	80	12
FTLB - 150S/L	1½"	180	115	220	12	22	45	145	35	6	327/338	50/70	138	100	152	125	100	12
FTLB - 200S/L	2"	216	137	270	18	28	48	175	45	8	445/467	83/88	176	125	180	154	125	14
FTLB - 250S/L	2½"	280	163	315	18	38	75	211	63	10	455/473	93/103	163	150	200	184	150	14
FTLB - 300S/L	3"	315	214	405	30	45	110	274	75	14	510/530	88/108	145	210	250	240	210	14
FTLB - 400S/L	4"	370	230	435	30	48	110	300	75	14	600/620	100/123	172	230	272	240	200	16

* All dimensions are in millimeters. Unless otherwise stated, specifications are subject to change without prior notice as improvements are made from time to time.

Mfgd. by :



An ISO 9001:2015 Certified Company
Fluid Tech Systems

Ahmedabad - 382 430. (Guj.) INDIA
E-mail : info@rotofluidpumps.com, mail@rotofluidpumps.com
Website : www.rotofluidpumps.com

Distributor :