

Series : FTRN/FTRB/FTRX



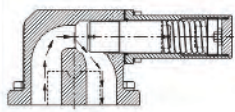
Rotary Gear Pumps
SINCE : 1993

Perfect Solution

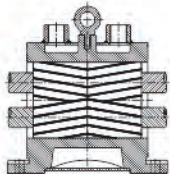
for Transfer of Oil, Viscous Liquid
& Petroleum Product



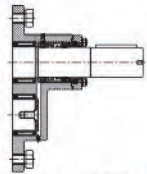
www.rotofluidpumps.com
ROTARY TWIN GEAR PUMPS



PRESSURE RELIEF VALVE



JACKETED BODY CONSTRUCTION



MECH. SEAL IN STUFFING BOX



An ISO 9001:2015 Certified Company

Fluid Tech Systems

Ahmedabad - 382 430. (Guj.) INDIA

NSIC
ISO 9001 : 2008



*“Let Our
Quality Speak
For Itself”*

ADVANCED TECHNOLOGY FOR PUMPING VISCOUS LIQUIDS



Rotary Gear Pumps
SINCE : 1993

ROTOFLUID® brand Gear Pump Model FTRN / FTRB / FTRX is heavy duty foot mounting type positive displacement rotary gear pump with flange (class 150 #ASME/ANSI B16.5).

MODEL & PERFORMANCE CHART

PUMP MODEL (SUCTION & DELIVERY) FTRN/FTRB/FTRX	CAPACITY			RECOMMENDED MOTOR BHP AT 1440 R.P.M.		
	LPM	US GPM	M ³ /hr	Up to 3 kg./cm ²	Up to 7 kg./cm ²	Up to 10 kg./cm ²
50 ½" X ½"	S 10	2.64	0.6	0.5	0.75	1.0
	M 15	3.96	0.9			
	L 25	6.60	1.5			
100 1" X 1"	S 30	7.92	1.8	1.0	1.5	2.0
	M 50	13.20	3.0			
	L 60	15.85	3.6			
150 1½" X 1½"	S 80	21.13	4.8	2.0	3.0	5.0
	M 100	26.41	6.0			
	L 125	33.02	7.5			
200 2" X 2"	S 150	39.62	9.0	3.0	5.0	7.5
	M 165	43.58	9.9			
	L 200	52.83	12.0			
250 2½" X 2½"	S 250	66.04	15.0	5.0	7.5	10.0
	M 300	79.25	18.0			
	L 330	87.17	19.8			
300 3" X 3"	S 415	109.63	24.9	10.0	12.5	15.0
	M 450	118.87	27.0			
	L 500	132.08	30.0			
400 4" X 4"	S 600	158.50	36.0	15.0	20.0	25.0
	M 665	175.67	39.9			
	L 830	219.26	49.8			
500 5" X 5"	S 1000	264.17	60.0	20.0	30.0	40.0
	M 1250	330.21	75.0			
	L 1500	396.25	90.0			
600 6" X 6"	S 1650	435.88	99.0	30.0	50.0	60.0
	M 1825	482.11	109.5			
	L 2080	549.47	124.8			

MODEL SELECTION

FTRB/FTRN : For clean viscous liquid having sufficient values such as Vegetable Oil, Animal Oil, Fish Oil, Clean Tube Oil, Gear Oil, Hydraulic Oil, Glycerin, Automotive & Diesel Engine Oils etc. For intermitted duty, the bush bearing type of pump (FTRB) is used and for continuous duty, needle roller bearing type of pump (FTRN) is selected.

FTRX : For liquid having low viscosity, low lubricating values, impure/dirty Crude Oil, dirty Lube Oil, HSD Kerosene, Sugar Solutions, LDO Paints, Wood Pulp, Varnish, Turpentine etc.

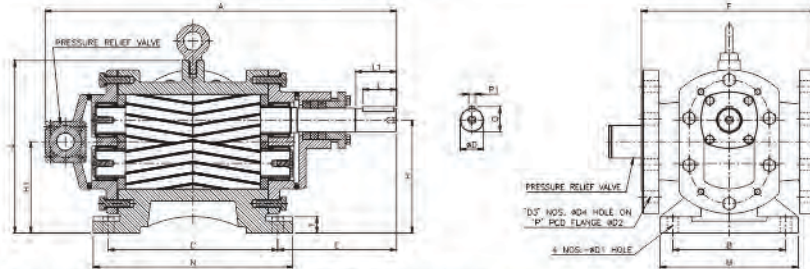
FTRBJ : The pump with the jacketing construction is for liquid which tends to solidify at room temperature such as Bitumen/Asphalt/Tar, Furnace Oil, Starch, Molasses, Naptha, Soap Solution, Wax etc. The jacketing construction in the pump facilitates heating of the pump by steam or thermic fluid.

SALIENT FEATURES

- Heavy duty foot mounting type Gear Pump designed for continuous application.
- Working Pressure upto 10 Bar.
- Size from ½" to 6" to handle flow from 10LPM to 2080LPM.
- Can handle maximum viscosity 25000CST
- Herringbone rotor design eliminate side thrust.
- Modified tooth profile enhance tooth life.
- Optionally steam jacket available.
- Double helical gear design prevent axial load.
- Low leakage path by design improve volumetric efficiency.
- Shorter bearing span reduces bending effect.

MATERIAL OF CONSTRUCTION

Parts	Material for FTRN / FTRX	Material for FTRB
Pump Body	CI/CS	CI/CS
Front Cover	CI/CS	CI/CS
Back Cover	CI/CS	CI/CS
Gland Cover	CI/CS	CI/CS
Rotor & Stator Shaft	EN-19	EN-19
Gear	EN-24/353	EN-24/353
Needle/Bush Bearing	INA/IKO (Japan)	Non-Ferrous
Wear Plate	Bronze	Bronze
R.V. Housing	Mild Steel	Mild Steel
R.V. Piston	EN-8	EN-8
R.V. AD Screw	EN-8	EN-8
Sealing	Neoprene Oil Seal	Gland Packing



APPLICATION INDUSTRIES

- Power & Gas Plant
- Steel Plant
- Cement Plant
- Petroleum Industries
- Refineries
- Pumping Station

ACCESSORIES

- Stand and Base Plate
- Product Connecting Flanges
- Motor and Gear Reducers
- Variable Frequency Drives
- Electric Motor Stator
- Couplings

DIMENSIONAL DRAWING DETAILS

PUMP MODEL FTRN/FTRB/FTRX	DIMENSIONS																				"WEIGHT OF PUMP (IN KG)"	
	OVERALL					MOUNTING					FLANGE					SHAFT						
	A	M	N	F	J	B	C	E	H	H1	T	ØD1	ØD2	D3	ØD4	P	ØD	L	L1	P1	Q	
050	241	108	128	145	123	80	100	89	80	67.5	13	10	89	4	16	60.3	11.5	22	29	4	13	7.0
100	278	124	144	160	140	90	110	101	90	74.25	15	10	108	4	16	79.4	15	24	29	5	17	11.0
150	321	138	164	180	160	105	130	118	100	80	16	10	127	4	16	98.4	21	29	39	6	23.5	17.0
200	365	145	185	200	174	110	150	134	112	89.5	15	12	152	4	19	120.7	24	39	50	8	27	22.0
250	426	165	200	220	202	130	160	164	132	106	15	15	178	4	19	139.7	27	39	55	8	30	34.0
300	483	200	260	240	238	160	220	167	160	131	25	18	191	4	19	152.4	32	49	54	10	35	52.0
400	560	220	318	280	275	180	270	188	180	145.5	26	18	229	8	19	190.5	37	54	64	10	40	80.0
500	620	240	330	305	300	200	280	216	200	160	25	20	254	8	22	216	47	58	83	14	50.5	109.0
600	697	285	410	340	340	220	350	216	225	178.75	25	22	280	8	22	241.3	52	84	93	16	56	158.0

* All dimensions are in millimeters. Unless otherwise stated, specifications are subject to change without prior notice as improvements are made from time to time.

Mfgd. by : **An ISO 9001:2015 Certified Company**

Fluid Tech Systems
 Ahmedabad - 382 430, (Guj.) INDIA
 Domestic : info@rotofluidpumps.com, mail@rotofluidpumps.com
 Export : marketing@rotofluidpumps.com
 Website : www.rotofluidpumps.com

Distributor :