

www.rotofluidpumps.com

ROTARY GEAR PUMPS

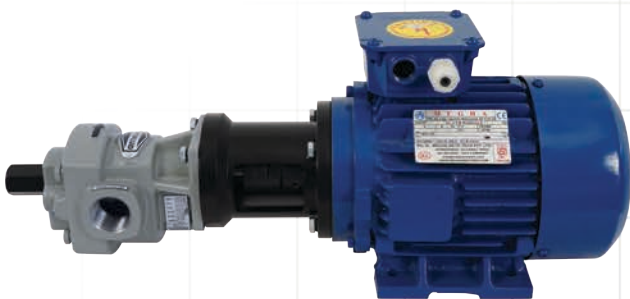
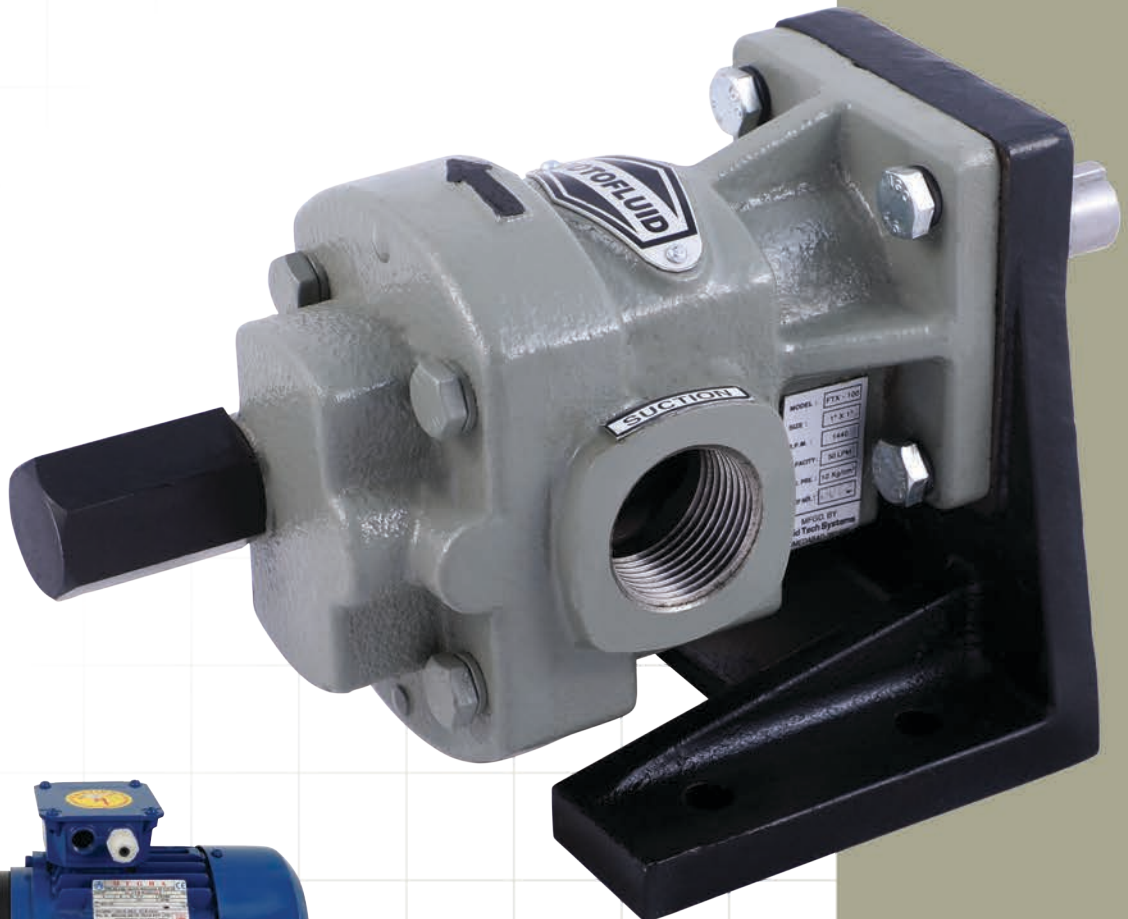
Series : FTX



Rotary Gear Pumps
SINCE : 1993

Perfect Solution

for Transfer of Oil, Viscous &
Semi Viscous Liquid



An ISO 9001:2015 Certified Company

Fluid Tech Systems

Ahmedabad - 382 430. (Guj.) INDIA



*“Let Our
Quality Speak
For Itself”*

ADVANCED TECHNOLOGY FOR PUMPING VISCOUS LIQUID



Rotary Gear Pumps
SINCE : 1993

ROTOFLUID® brand Rotary Gear Pump Model FTX are economical, compact, efficient, self-priming, flange cum foot mounted pumps, capable of handling all types of viscous & semi-viscous liquids.

FTX Monoblock pump

Simple and compact designs of monoblock pumps are available in this model. Monoblock version is very easy to portable one to another place and it does not required to align every time when coupled with electric motor. Monoblock version save space and reduces down time.

MODEL & PERFORMANCE CHART

PUMP MODEL	SUCTION & DELIVERY	CAPACITY AT 1440 RPM			RECOMMENDED MOTOR HP		
		LPM	US GPM	M ³ /hr	Up to 3 kg./cm ²	Up to 7 kg./cm ²	Up to 10 kg./cm ²
FTX - 025	¼" X ¼"	2.5	0.66	0.15	0.25	0.35	0.5
		5	1.32	0.3			
FTX - 050	½" X ½"	10	2.64	0.6	0.5	0.75	1.0
		20	5.28	1.2			
FTX - 075	¾" X ¾"	25	6.60	1.5	0.75	1.0	1.5
		30	7.92	1.8			
FTX- 100	1" X 1"	35	9.24	2.1	1.0	1.5	2.0
		50	13.20	3.0			
FTX - 125	1¼" X 1¼"	75	19.81	4.5	1.5	2.0	3.0
FTX - 150	1½" X 1½"	110	29.05	6.6	2.0	3.0	5.0
FTX - 200	2" X 2"	225	59.44	13.5	3.0	5.0	7.5
FTX - 250	2½" X 2½"	350	92.46	21.0	5.0	10.0	12.5

APPLICATION INDUSTRIES

- Oil & Gas Industry
- Cement Plant
- Power Plant
- Steel Plant
- Paint, Varnish & Ink Industry

LIQUIDS CAN HANDLE

- All types of Oils (Mineral Oil / Vegetable Oil/Fish Oil/Animal Oil/Fuel Oil/Diesel Oil/Furnace Oil)
- Bitumen / Asphalts
- Paints & Varnish
- Sugar Molasses & Syrup
- Glue
- Soap Solution
- Non-Corrosive Viscous Chemicals

ACCESSORIES

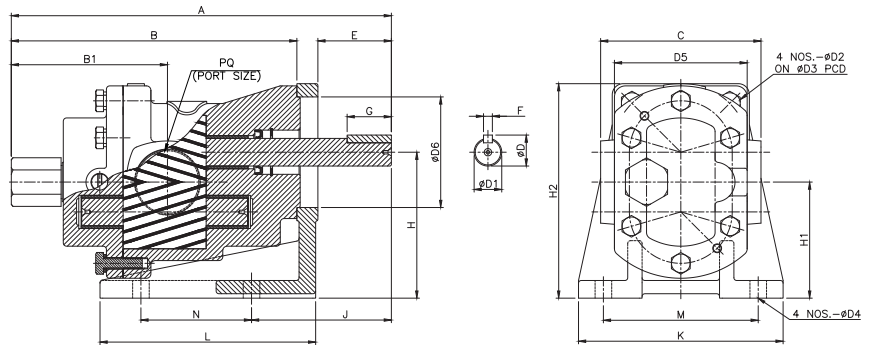
- Stand and Base Frame
- Product Connecting Flanges
- Motor and Gear Reducers
- Variable Frequency Drives
- Motor Stator
- Couplings

Salient Features

- Size from ¼" to 2 ½" to handle flow from 2.5 LPM to 350 LPM
- Designed to handle fluid at temperature 80°C in FTX and 200°C in FTX (HT)
- High strength two pieces Cast Iron construction with single helical strength Alloy Steel Gears & Shaft Sets.
- Gears are shrunk fitted on alloy steel hardened & grounded shaft well supported with the help of 4 nos. of self-lubricated Bronze Bush bearing.
- Sealing options available – Oil Seal / Gland Packing / Single Mechanical Seal
- The relief valve operation can be reversed by changing the back cover on opposite side.
- Can handle maximum viscosity 25000 CST
- Self-Priming
- Working Pressure upto 10Bar

MATERIAL OF CONSTRUCTION

Parts	FTX up to 80°C	FTX (HT) up to 200°C
Body	IS.210 FG 220 C.I. Grade	
Back Cover	IS.210 FG 220 C.I. Grade	
Gears	EN - 8	EN – 353 Nitrided
Shaft	EN -19 H.G.	
Bushes	Non Ferrous	
Seal	Neoprene Oil Seal	Gland Packing



DIMENSIONAL DRAWING DETAILS

PUMP MODEL	OVER ALL											MOUNTING & SHAFT											APPROX WEIGHT	
	A	B	B1	C	H2	L	D	ØD1	ØD2	ØD3	ØD4	SQ. D5	ØD6	E	F	G	H	H1	J	K	M	N		PQ
FTX-025	146	107	63	65	91.5	65	10.7	9.5	6	59	8	55	45	27.5	3	18	63	53.2	48	80	60	35	¼" B.S.P.	2.3 kg.
FTX-050	170	127	75	70	102	82	13.5	12	7	66	8	60	52	31.5	4	22	71	58.5	58	94	70	40	½" B.S.P.	3.2 kg.
FTX-075	213	158	93	90	116.5	102	16	14	9	75	10	70	60	41.5	5	25	80	65.2	76	110	85	45	¾" B.S.P.	5.5 kg.
FTX-100	232	177	102	94	131	108	19.5	17	9	83	10	78	68	41	5	27.5	90	73	77	120	92	50	1" B.S.P.	7.5 kg.
FTX-125	259	190	110	100	147	135	22.5	20	9	95	12	90	75	53.5	6	32	100	80.5	98	140	105	60	1¼" B.S.P.	8.7 kg.
FTX-150	286	208	121	108	164	143	24.5	22	9	105	12	100	85	59	6	35	112	90	104	150	115	70	1½" B.S.P.	11.8 kg.
FTX-200	343	258	141	145	194	195	28	25	13	125	15	120	100	66.5	8	40	132	105	126	185	140	100	2" B.S.P.	21.7 kg.
FTX-250	417	302	177	160	230	185	31	28	13	140	15	135	112	91	8	45	160	128	133	220	155	120	2½" B.S.P.	32.7 kg.

* All dimensions are in millimeters. Unless otherwise stated, specifications are subject to change without prior notice as improvements are made from time to time.

Mfgd. by :

An ISO 9001:2015 Certified Company



Distributor :